

UNION CONNECTORS

15

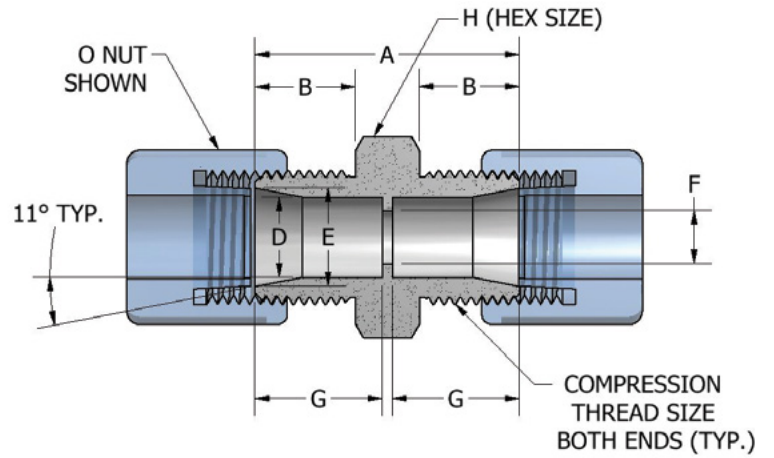
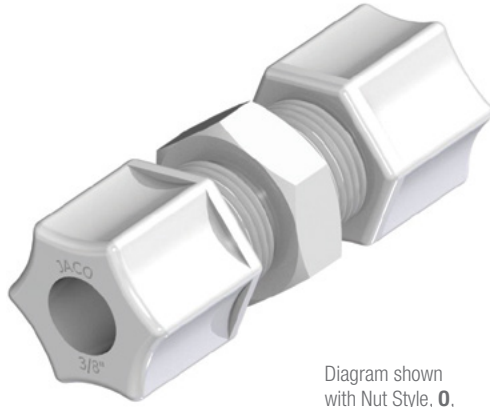


Diagram shown with Nut Style, O, Standard Ferrule Nut

UNION CONNECTORS

JACO Part No.	Tube O.D.	Comp. Thd.	A	B	D	E	F	G	H
Conf. - Tube - Mtl. - Nut			±1/64	±1/64	+0.005				
15 - 4 - P - O	1/4	7/16-20	63/64	3/8	.250	.330-.335	.170	15/32	5/8
15 - 5 - K - SG	5/16	1/2-20	1-1/32	25/64	.312	.380-.385	.232	31/64	11/16
15 - 6 - K - SG	3/8	5/8-20	1-15/64	15/32	.375	.460-.465	.250	19/32	13/16
15 - 8 - K - SG	1/2	3/4-20	1-7/16	9/16	.500	.590-.595	.375	11/16	15/16
15 - 10 - K - SG	5/8	7/8-20	1-1/2	19/32	.625	.715-.720	.500	45/64	1-1/16
15 - 12 - K - SG	3/4	1-1/16-20	1-3/4	43/64	.750	.860-.865	.625	13/16	1-5/16
15 - 14 - K - SG	7/8	1-3/16-16	1-57/64	3/4	.875	.995-1.000	.750	7/8	1-7/16

REDUCING UNION CONNECTORS

15

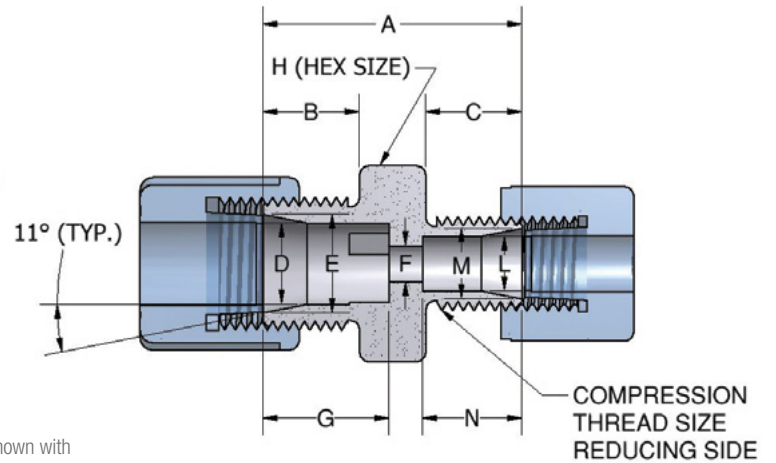


Diagram shown with Nut Style, O, Standard Ferrule Nut

REDUCING UNIONS

JACO Part No.	Tube O.D.	Comp. Thd.	Comp. Thd.	A	B	C	D	E	F	G	H	L	M	N
Conf. - Tube - Tube - Mtl. - Nut				±1/64	±1/64	±1/64	+0.005					+0.005		
15 - 4 - 2 - P - O	1/4-1/8	7/16-20	5/16-24	59/64	3/8	5/16	.250	.330-.335	.109	15/32	5/8	.125	.175-.180	7/16
15 - 5 - 4 - K - SG	5/16-1/4	1/2-20	7/16-20	1	3/8	3/8	.312	.380-.385	.170	31/64	11/16	.250	.330-.335	15/32
15 - 6 - 4 - K - SG	3/8-1/4	5/8-20	7/16-20	1-3/16	29/64	29/64	.375	.460-.465	.170	19/32	13/16	.250	.300-.335	15/32
15 - 8 - 6 - K - SG	1/2-3/8	3/4-20	5/8-20	1-5/16	9/16	29/64	.500	.590-.595	.250	11/16	15/16	.375	.460-.465	19/32
15 - 10 - 6 - K - SG	5/8-3/8	7/8-20	5/8-20	1-23/64	19/32	15/32	.625	.715-.720	.250	45/64	1-1/16	.375	.460-.465	19/32
15 - 10 - 8 - K - SG	5/8-1/2	7/8-20	3/4-20	1-15/32	19/32	9/16	.625	.715-.720	.375	45/64	1-1/16	.500	.590-.595	11/16
15 - 14 - 10 - K - SG	7/8-5/8	1-3/16-16	7/8-20	1-21/32	3/4	17/32	.875	.995-1.000	.500	7/8	1-7/16	.625	.715-.720	45/64