

Electric automatic chlorine  
shut-off device



Protect operators with an automatic  
shut-off device for chlorine cylinders and  
drums. It exceeds the performance  
requirements of AS 2927:2019



Automatically closes valves in less than one second



[www.trility.com.au](http://www.trility.com.au)

# Design your own system by choosing the actuator and controller to suit your needs

With the correct choice of actuator and controller up to six containers can be closed sequentially or two can be closed simultaneously.

Controllers can provide up to 12 different alarms and status signals including programmable relays and output options for SCADA or PLC systems.

All automatic shut-off systems prevent operators from having to enter a toxic environment to close a leaking valve and are supplied with an emergency stop panic button for remote activation.

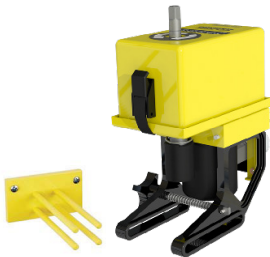
There are two models of actuator and both are suitable for closing cylinder and drum valves and are supplied with actuator storage brackets for operator convenience.



Terminator cylinder mount



Terminator drum mount



Eclipse drum and cylinder mount



Emergency stop button

Actuator	Terminator	Eclipse	Eclipse
Controller	Gemini	Duplex	Hexacon
Max. number of actuators	2	2	6
Valve closure	sequential	simultaneous	sequential
Battery back-up life	3 days	3 days	3 days
Low voltage relay outputs	1	2	2
Confirms correct torque	x	✓	✓
Max. distance between controller and actuator	17ft (approx 5m)	40ft (approx 12m)	40ft (approx 12m)
Valve opened prior to installing actuator	✓	x	x

Quickly stops 99% of all chlorine leaks

# Terminator actuator with Gemini controller

This economical automatic shut-off device quickly closes up to two containers to stop the supply of chlorine.

### Key components

- Closes valves in less than one second
- 40-50 lb/ft of closing torque as recommended by the Chlorine Institute
- Suitable for cylinders and drums
- Local, remote or automatic shutdown
- DC powered system
- NEMA 4X enclosure
- No tools required for installation on chlorine container valve
- Compatible with all cylinder mounted vacuum regulators
- Includes wall storage bracket
- Retention pin for added security
- Impact drive motor
- In-service testing
- Easy to fit
- Battery backup up to three days
- Suitable for chlorine and sulfur dioxide containers



### Terminator actuator

When two actuators are used in the system they will close sequentially in less than one second. Being a safety device, the Terminator is only powered in the closing direction.

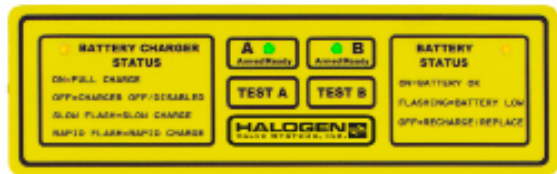
The system is DC electric powered with AC only used for keeping the battery optimally charged at all times. In the event of a loss of AC power, the system continues to protect for 3 days. If AC power remains off for an extended period of time, the system will auto-initiate a close while sufficient battery power remains.

The Terminator requires no tools for installation, either on a cylinder or a drum.

### Gemini controller

When the Gemini controller receives a close signal from a gas detector, emergency stop button, or SCADA system, the Terminator is activated and the container valve is closed in less than one second.

The system includes a low voltage 24VDC relay output for remote indication of close activation and an optional relay interface module provides dry contact relays with latching capabilities when required.



### Control panel

- Armed/ready
- Battery charger status
- Battery status

### Specifications

Maximum number of actuators	2
Valve closure	sequential
Battery back-up life	3 days
Low voltage relay outputs	1
Confirms correct torque	x
Maximum distance between controller and actuator	17ft (approx 5m)
Valve opened prior to installing actuator	✓
Motor speed	1600RPM

### Options

- Relay interface module
- Annual preventative maintenance programme



# Eclipse actuator with Duplex controller

The Duplex controller and Eclipse actuator close up to two containers simultaneously to stop the supply of chlorine.

### Key components

- Measures and confirms correct closing torque has been achieved
- Actuator is installed and armed BEFORE the operator opens the chlorine valve
- LCD system information
- Fault error diagnostic system
- 30 lb/ft of torque for test closing
- Constructed from materials suitable for a chlorine environment
- Three-way over torque protection
- Local, multiple remote switches or automatic shutdown
- Closes valves in less than one second
- 40-50 lb/ft of closing torque as recommended by the Chlorine Institute
- Suitable for cylinders and drums
- DC powered system
- NEMA 4X enclosure
- No tools required for installation on chlorine container valve
- Includes wall storage bracket
- Battery backup up to three days
- Suitable for chlorine and sulfur dioxide containers



### Eclipse actuator

When two actuators are used in the system they will close simultaneously in less than one second. Being a safety device, the Eclipse cannot power the valve open. While installed, the operator can open and close the valve manually with a standard wrench.

During a prolonged power outage, the microprocessor will automatically close the valve before the battery is depleted and an alarm contact will be activated when the valve is torqued.

### Duplex controller

The Duplex controller system is microprocessor controlled and can be initiated without having to enter a toxic environment by means of a signal from a gas detector system, panic button, SCADA system, fire or seismic alarm etc.

The control panel has the capability of initiating a testing operation of the Eclipse actuator which includes:

- 30 lb/ft torque on the valve stem
- self-test of microprocessor
- check cable-motor continuity
- load-test the battery



### Control panel

- Armed/ready
- System status
- System status information - battery, actuators, microprocessor system, fault errors

### Specifications

Maximum number of actuators	2
Valve closure	simultaneous
Battery back-up life	3 days
Low voltage relay outputs	2
Confirms correct torque	✓
Maximum distance between controller and actuator	40ft (approx 12m)
Valve opened prior to installing actuator	x
Shaft speed	120RPM

### Options

- Relay interface module
- Annual preventative maintenance programme
- RS232 serial port output to SCADA
- Satellite gas detector connection

# Eclipse actuator with Hexacon III controller

This system closes up to six containers sequentially to stop the supply of chlorine with advanced fault detection for early warning of system errors.

## Key components

- Optional second battery reduces time to close all valves by 50%
- Measures and confirms correct closing torque has been achieved
- Actuator is installed and armed BEFORE the operator opens the chlorine valve
- OLED system information
- Fault error diagnostic system
- 30 lb/ft of torque for test closing
- Constructed from materials suitable for a chlorine environment
- Three-way over torque protection
- Local, multiple remote switches or automatic shutdown
- Closes valves in less than one second
- 40-50 lb/ft of closing torque as recommended by the Chlorine Institute
- Suitable for cylinders and drums
- DC powered system
- NEMA 4X enclosure
- No tools required for installation on chlorine container valve
- Includes wall storage bracket
- Battery backup up to three days
- Suitable for chlorine and sulfur dioxide containers



## Eclipse actuator

When six actuators are used in the system they will close sequentially. Being a safety device, the Eclipse cannot power the valve open. While installed, the operator can open and close the valve manually with a standard wrench.

## Hexacon controller

The Hexacon controller system is microprocessor controlled with up to 12 different alarms and status signals available by relay outputs.

The optional second battery provides redundancy and increases speed. It reduces the total time to close all valves by 50%.

The control panel has the capability of initiating a testing operation of each individual actuator.



## Control panel

- Armed/ready
- Charge ok/Charge off
- Battery ok
- Battery low
- Fault errors - no battery, low battery, high battery, bad battery, low voltage, high voltage, fuse undetected, internal supply A, internal supply B, actuator shorted, actuator offset, actuator timed out, actuator disconnected

## Specifications

Maximim number of actuators	6
Valve closure	sequential
Battery back-up life	3 days
Low voltage relay outputs	2
Confirms correct torque	✓
Maximum distance between controller and actuator	40ft (approx 12m)
Valve opened prior to installing actuator	x
Shaft speed	120RPM

## Options

- Programmable relay interface module
- Annual preventative maintenance programme
- RS232 serial port output to SCADA
- Second battery system

# Chlorine gas leak detector

Hydramet's chlorine gas leak detector provides a flexible, reliable and self-testing gas detection system.

The auto-test feature automatically verifies sensor operation every 24 hours.

### Key Components

- Audible horn
- Up to six sensors each with individual receiver modules
- Battery back-up included
- LED display indicates gas concentration in parts per million (PPM)
- Two adjustable alarm set points can be set at different concentration levels
- Auto-tests every 24 hours
- Trouble alarm should the sensor not respond to the test
- Three alarm relays for external alarming
- Complies with the Australian Standard AS 2927 leak detector performance requirements



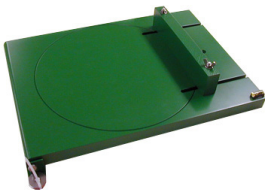
According to Australian Standard, AS 2927:2019 The storage and handling of liquefied chlorine gas; leak detectors shall be installed in chlorination rooms and where chlorine is connected for use

# Cylinder scale package

The solid PVC cylinder scale base will never corrode. At only 4cm high, the low profile platform allows the cylinders to be easily rolled on and off.

Coupled with a Wizard 4000 digital weight indicator the package can display:

- Net weight remaining
- Daily usage
- Amount used - running total
- Feed rate - current chemical feed rate in kg/hr
- Days until empty - at current feed rate
- Tare weight
- Percentage full
- Gross weight
- Display reads down to 0.1kg increments



[www.trility.com.au](http://www.trility.com.au)



For further information  
New South Wales and  
Australian Capital Territory  
+61 2 4350 8200

Victoria  
+61 3 9325 3900

Northern Territory and  
South Australia  
+61 8 8374 7800

Western Australia  
+61 8 9412 6100

Queensland  
+61 7 3802 9500

[sales@trility.com.au](mailto:sales@trility.com.au)

Tasmania  
+61 3 6391 7300